



GMT MONTHLY MEMBERSHIP PROGRESS REPORT

Results as of: 2/29/2024

Multiple District 321

LOCATION: INDIA

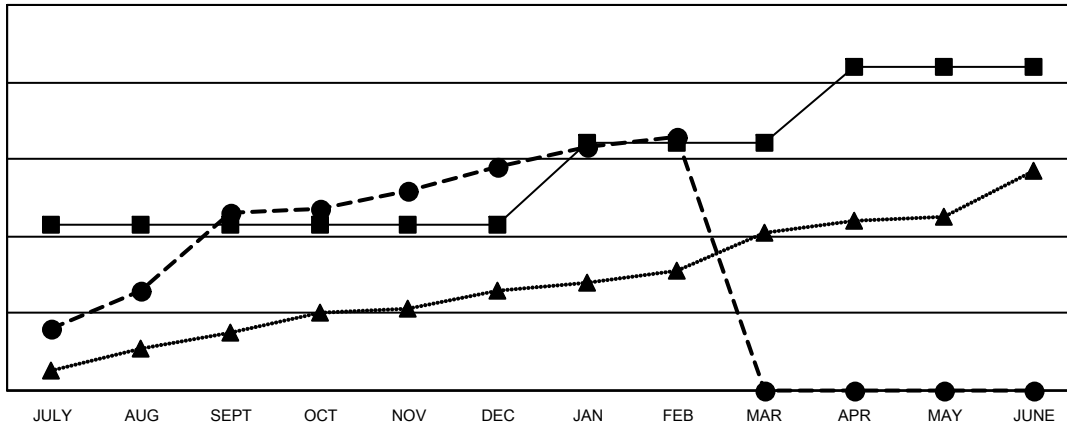
GMT: OPEN

GMT CA 6 - I

Clubs			
RESULTS FOR 2023-2024			
QUARTER	NEW CLUB GOAL	NEW CLUBS	DROPPED CLUBS
JULY/AUG/SEPT	43	46	9
OCT/NOV/DEC	0	12	32
JAN/FEB/MAR	21	8	12
APR/MAY/JUNE	20	0	0

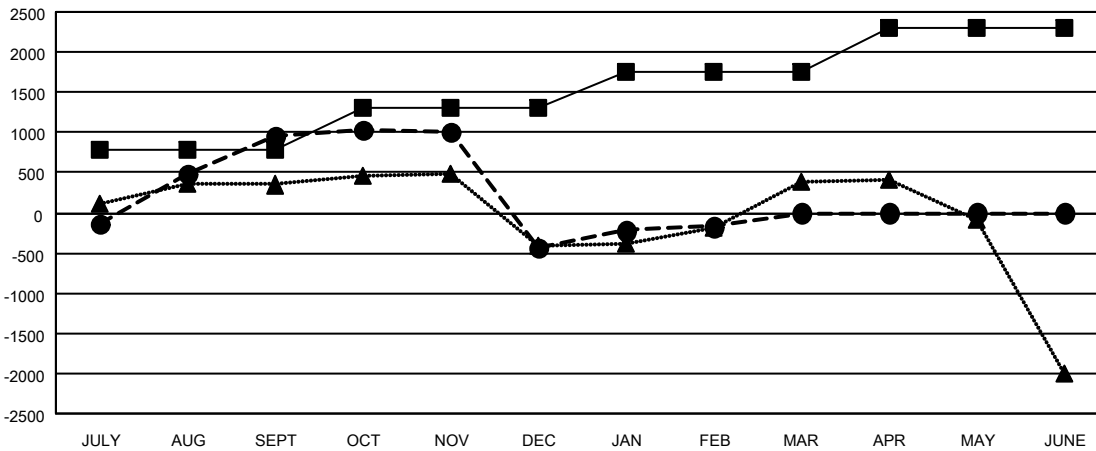
Members			
RESULTS FOR 2023-2024			
QUARTER	MEMBER GROWTH NET GOAL	MEMBER GROWTH ACTUAL	DROPPED MEMBERS ACTUAL (including transfers)
JULY/AUG/SEPT	790	2,914	1,565
OCT/NOV/DEC	515	1,227	2,484
JAN/FEB/MAR	442	833	409
APR/MAY/JUNE	545	0	0

GOALS AND ACTUAL NEW CLUBS CUMULATIVE



- - CURRENT YEAR GOALS FOR NEW CLUBS
- - CURRENT YEAR ACTUAL NEW CLUBS
- ▲ - LAST YEAR ACTUAL NEW CLUBS

GOALS AND ACTUAL MEMBERS CUMULATIVE



- - MEMBER GROWTH NET GOAL
- - MEMBER GROWTH ACTUAL
- ▲ - LAST YEAR MEMBERSHIP ACTUAL

DROPPED CLUBS: 53	598 CLUBS OF 1198 ADDED 1 OR MORE NEW MEMBERS	GENDER DISTRIBUTION MALE 22,040 (69.98%) FEMALE 9,455 (30.02%)
DROPPED MEMBERS DECEASED 84 CLUB CANCELLED 706 OTHER 3,668 TOTAL 4,458	CLICK HERE FOR CUMULATIVE MEMBERSHIP DATA	TOTAL FAMILY UNIT MEMBERS 16,110 FAMILY MEMBERS PAYING HALF DUES 9,583